



GATEWAY

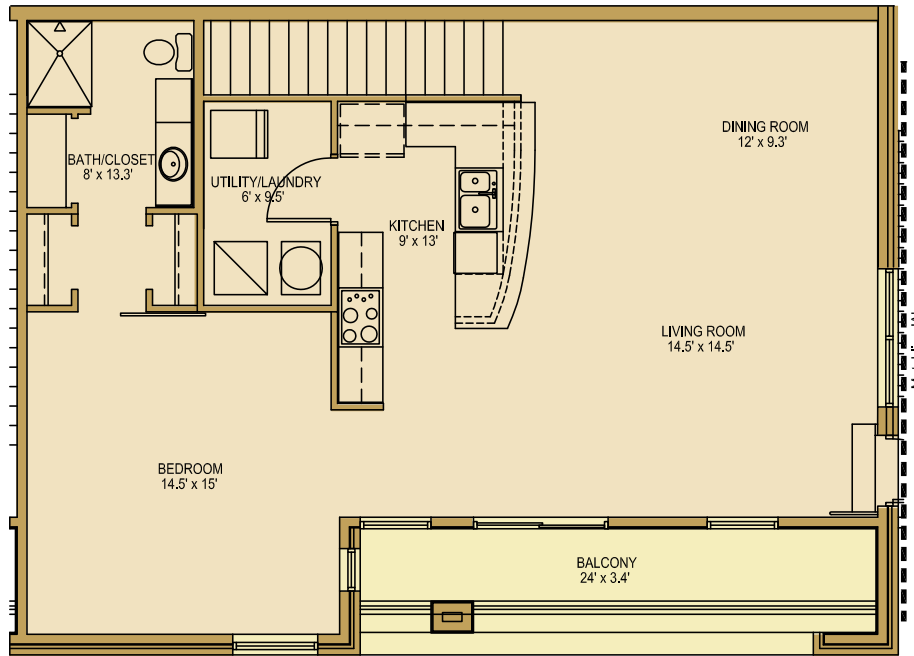
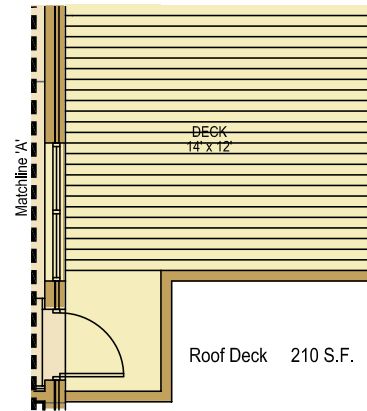
1150 VINE STREET

- 28 lofts, townhomes, & live/work spaces
- Garage parking
- Elevator access
- Private balconies
- Secure entrances
- New construction with modern architecture
- Corner of 12th & Vine



Unit 42
1150 s.f. (+ 96 s.f. Balcony & 210 s.f. Deck)
\$185,000

Fourth Floor



Outstanding Unit Features

- One bedroom with two closets and full bath
- Staggered galley-style kitchen offers an open feeling while cooking
- Spacious, open living area
- Roof top deck with fabulous city views
- Large laundry room
- Large balcony overlooking Ensemble Theater

urban living

Gateway

Quarter

www.GatewayQuarter.com • 513-621-GATE

Arts
Living
Architecture

