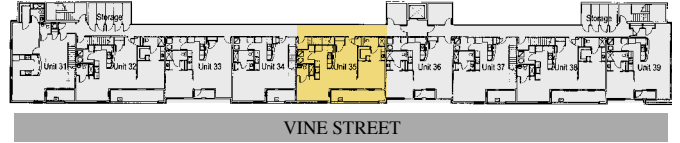




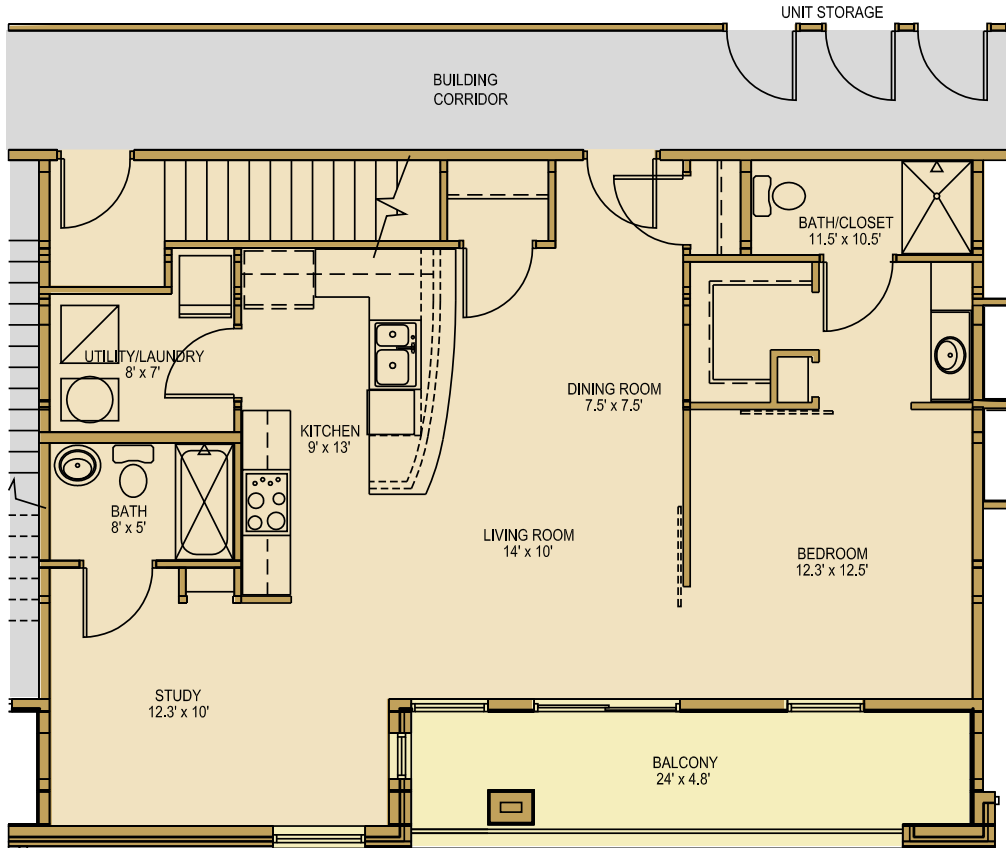
GATEWAY

- 28 lofts, townhomes, & live/work spaces
- Garage parking
- Elevator access
- Private balconies
- Secure entrances
- New construction with modern architecture
- Corner of 12th & Vine



Unit 35
999 s.f. (+ 132 s.f. Balcony)
\$166,000

Third Floor



Outstanding Unit Features

- One bedroom with study provides the perfect space to work or enjoy a hobby - or use as a 2nd bedroom
- 2 full baths
- Staggered galley-style kitchen offers an open feeling while cooking
- Large laundry room
- Large balcony
- Walk-in closet for easy storage

urban living

Gateway Quarter

Arts
Living
Architecture

