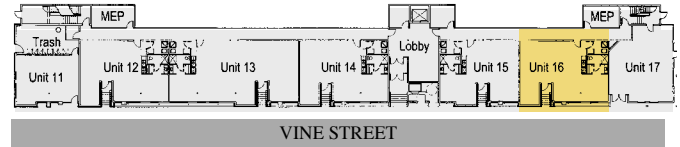




GATEWAY

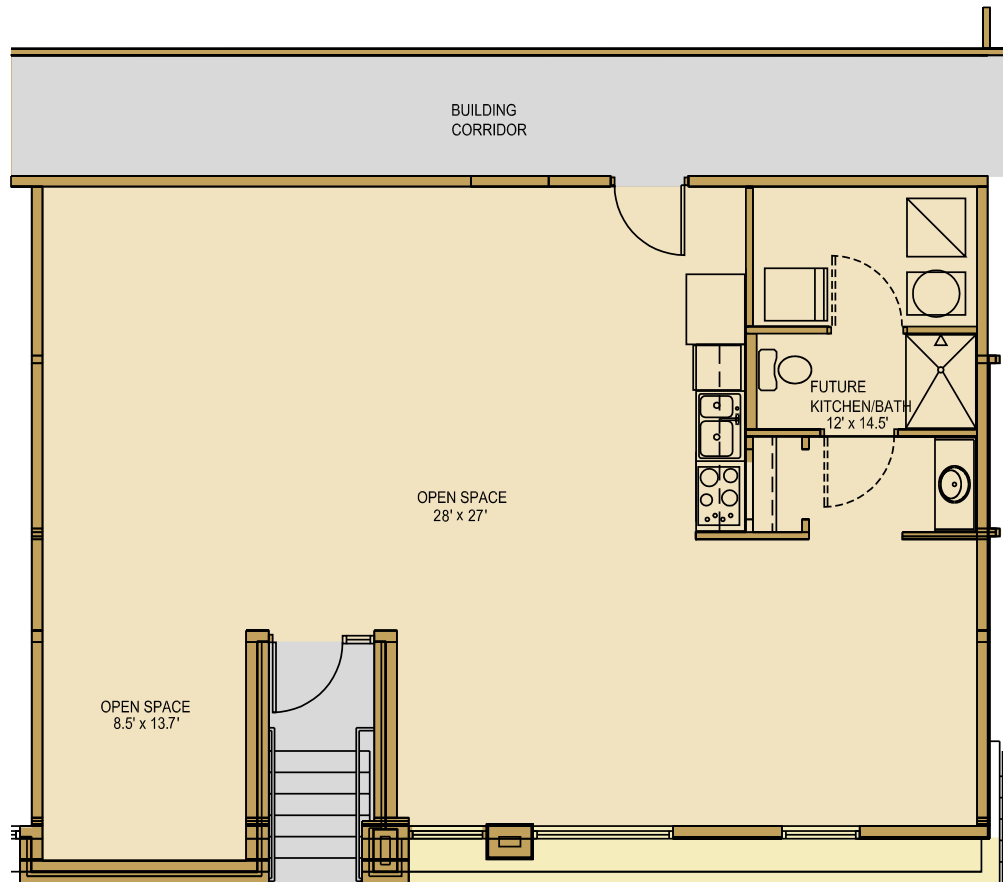
1150 VINE STREET

- 28 lofts, townhomes, & live/work spaces
- Garage parking
- Elevator access
- Private balconies
- Secure entrances
- New construction with modern architecture
- Corner of 12th & Vine



Unit 16
 1135 s.f. - Live & Work
 \$130,870

First Floor



Outstanding Unit Features

- Flexible live/work space
- Ideal for studio, consulting business
- Great visibility on Vine Street, across from Ensemble Theater and near arts district
- Large enough for two bedrooms

urban living

Gateway Quarter

www.GatewayQuarter.com • 513-621-GATE

Arts
Living
Architecture

