



# GATEWAY

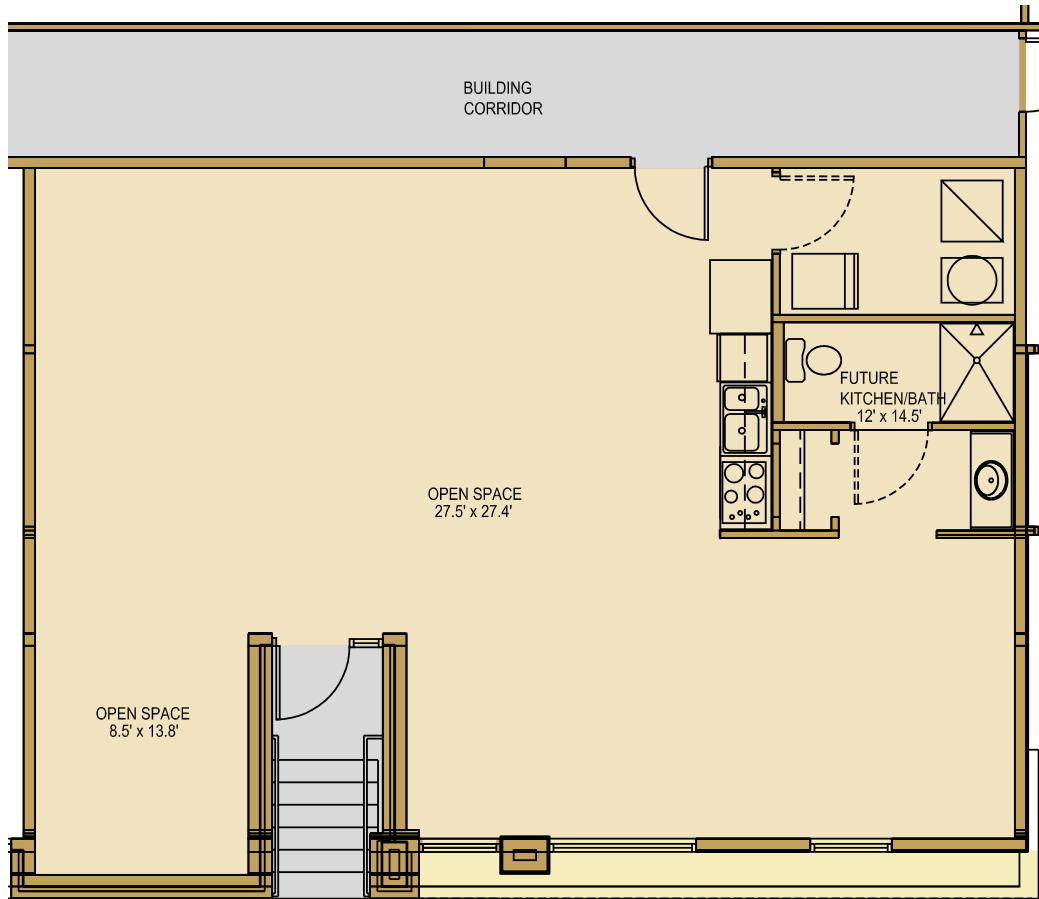
1150 VINE STREET

- 28 lofts, townhomes, & live/work spaces
- Garage parking
- Elevator access
- Private balconies
- Secure entrances
- New construction with modern architecture
- Corner of 12th & Vine



**Unit 14**  
 1143 s.f. - Live & Work  
 \$179,675

First Floor



### Outstanding Unit Features

- Flexible live/work space
- Ideal for studio, consulting business
- Great visibility on Vine Street, across from Ensemble Theater and near arts district
- Large enough for two bedrooms

urban living

# Gateway Quarter

[www.GatewayQuarter.com](http://www.GatewayQuarter.com) • 513-621-GATE

Arts  
Living  
Architecture

